

Elastomer 《temple tip made from TPE》

TPE: Thermo Plastic Elastomer

(TPE) is an expandable elastic material. This is an ideal material for projects that require grip performance on the frame itself. If you think that silicone is too soft, but you need grip performance, please try TPE temple tips.

HY-1844



HY-1844



CW-FA/M1



ELA-01M



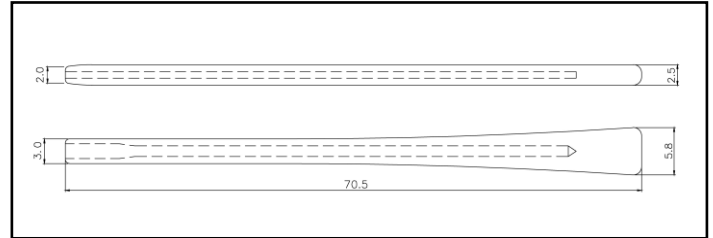
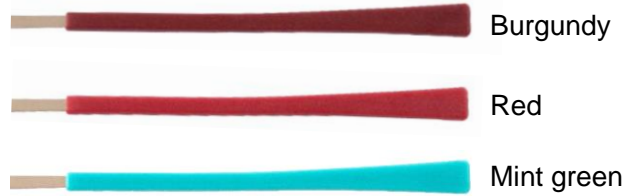
INTER EYES CO.,LTD.

EV EURO VISION CO.,LTD.

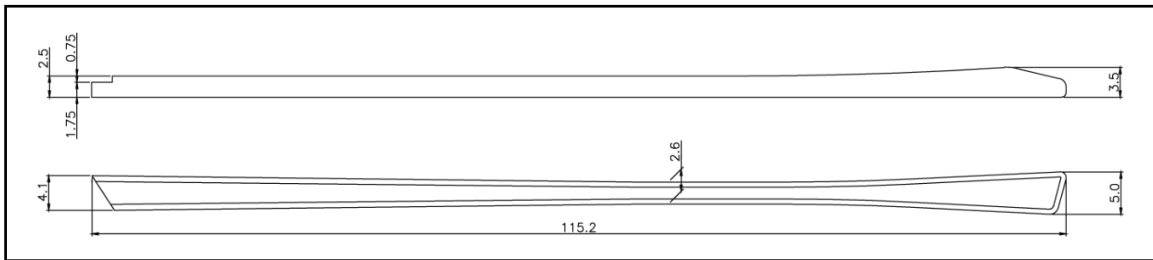
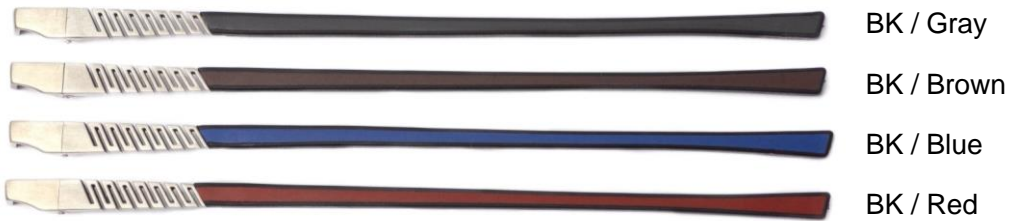
Standard designs

Material : TPE(Thermo Plastic Elastomer)

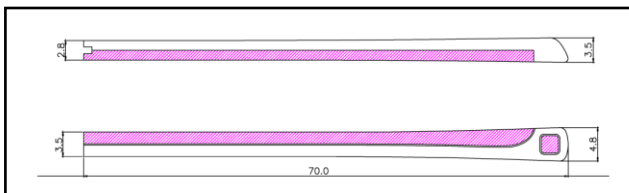
HY-1844: 10 colors



CW-FA/M1: 4 colors



ELA-01M: 5 colors



Comply with REACH regulations

